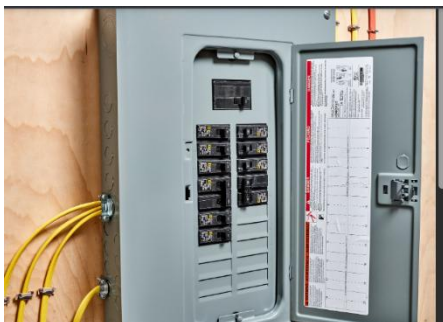




There are many outlets tied to a circuit breaker. Do not plug in both extension cords to two different outlets on the **SAME** circuit breaker. They must **EACH** be on a separate **DEDICATED** circuit breaker.



Circuit Breaker Box



A Circuit Breaker



A 15- or 20-amp circuit breaker holds one inflatable, but it must be dedicated so that nothing else is pulling electricity off the same breaker.